

Installation Guide

GigaFlex CAT6+ Patch Panel mounting on 19" racks



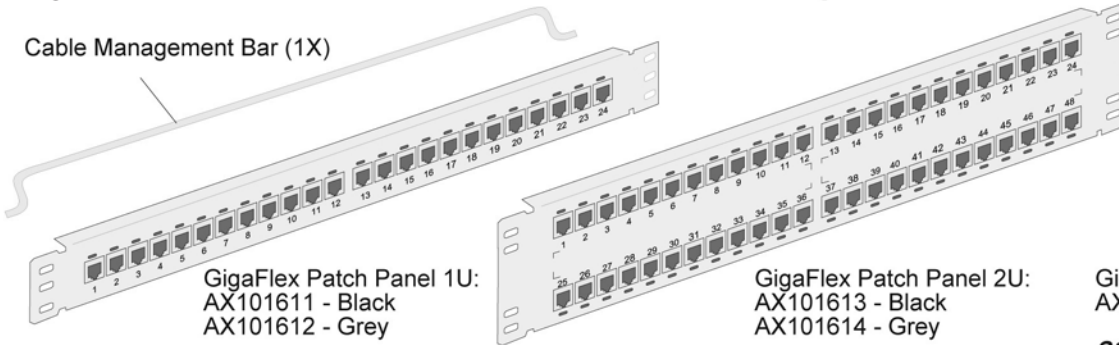
Version 02.00 2007 PX104023

1 of 2 pages

GigaFlex CAT6+ Patch Panel

Basic Components

Select the required components to your workplan (Typical items shown here)



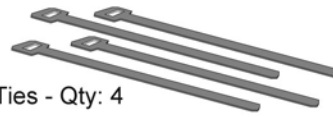
Reference Documents

PX103329
- GigaFlex Modules
Installation Guide

Machine Screws:
- 10 x 32 Qty: 4
- 12 x 24 Qty: 4



Velcro Ties - Qty: 4

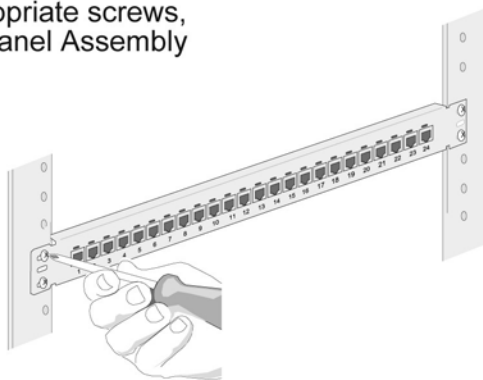


GigaFlex Tool:
AX100749 (or equivalent)

Standard Tools

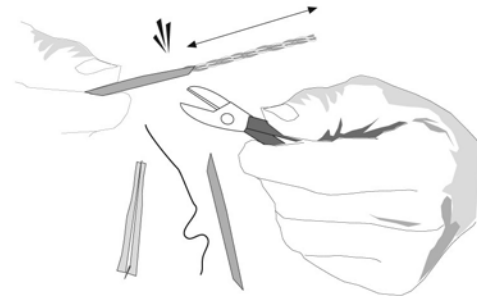
- Phillips screwdriver
- Cable stripper
- Wire stripper

1. Using the appropriate screws, attach the Patch Panel Assembly to the rack.



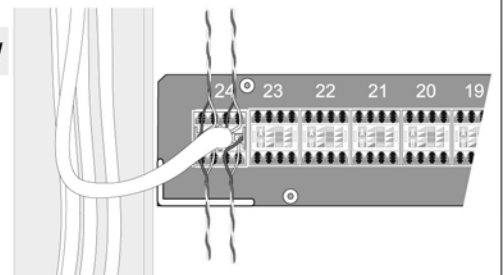
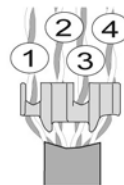
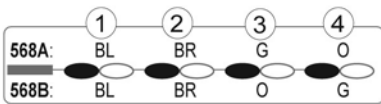
(10 X 32 screws and 12 X 24 screws supplied)

2. Prepare cable for termination.
approx. 3"



3. Wire Preparation

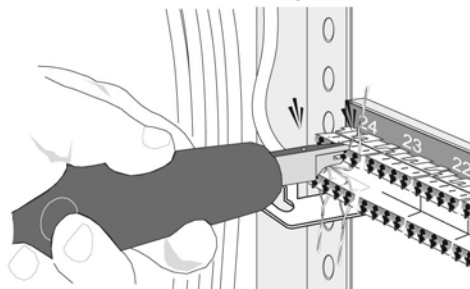
Refer to PX103329 for detailed instructions on terminating GigaFlex modules!



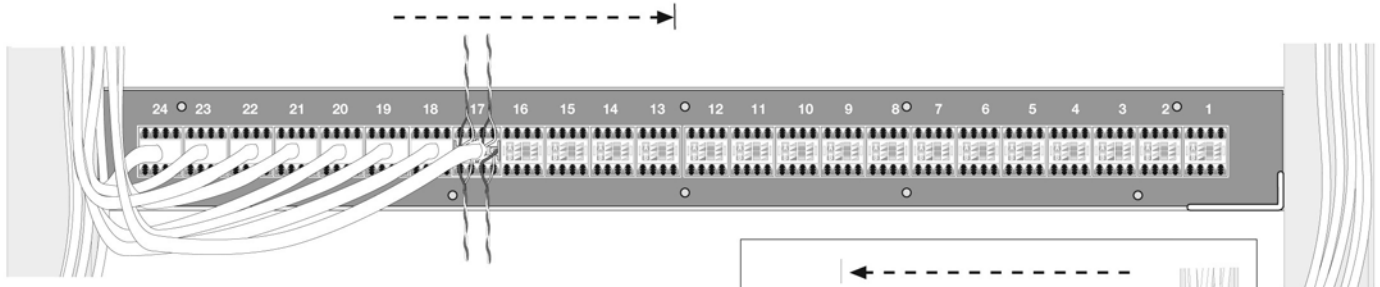
4. Wire Termination

Using the GigaFlex Connecting Tool, terminate the first four pairs onto the **first module**.

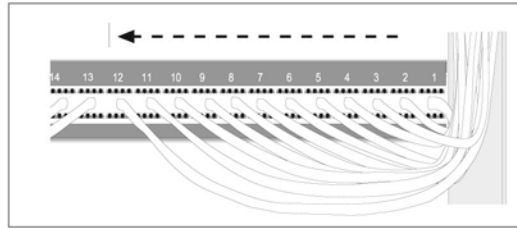
Important:
Always respect minimum bend radius of the cable!



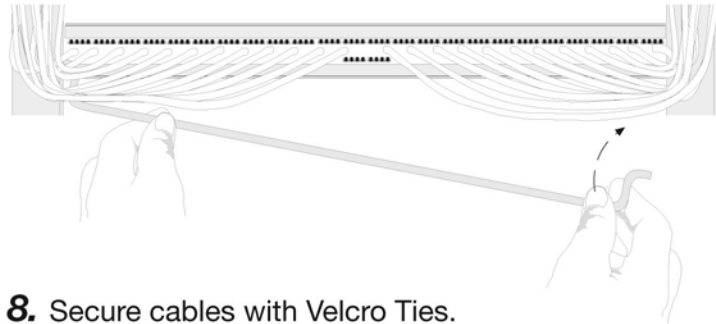
5. Continue assembling the **left side**, in this sequence, to the center of the panel.



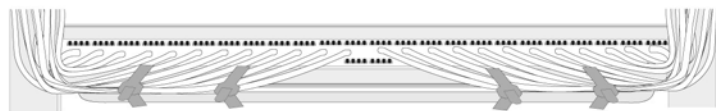
6. Repeat the assembly sequence for the **right side**, moving inward to the center of the panel.



7. Guide the Cable Management Bar under the cables, and secure in the lower mounting holes of the patch panel

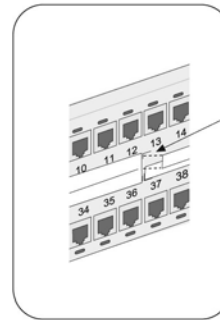


8. Secure cables with Velcro Ties.



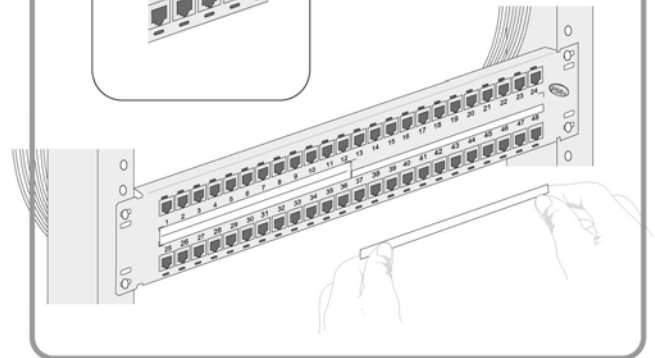
A completed GigaFlex Patch Panel Assembly

9. Install Port I.D. Labels.



Use positioning marks as a guide.

To be revised!



Installer's Tip

To facilitate wiring a **2U Type** GigaFlex CAT6+ Patch Panel, the following procedure is recommended:

1. Terminate the **upper row**, as previously shown.
2. Guide the bar under the cables and **install** in the **upper holes**.
3. Terminate the **lower row**.
4. Secure cables with Velcro Ties.

