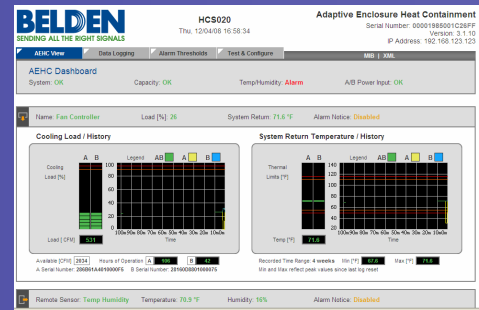


Adaptive Enclosure Heat Containment System

- ❖ Increased Efficiency/**Greening** of the Data Center
- ❖ Eliminates over-supply of cold air
 - ❖ Defined hot air return path eliminates mixing and hot spots
- ❖ System automatically scales fan speed to match IT load
 - ❖ 10 KW and 20KW hot swappable fan cartridges
- ❖ Reports cooling load in real time for each enclosure
- ❖ Fully utilizes cooling infrastructure
 - ❖ Deploy more IT load in existing sites



- A:** All IT exhaust heat has a direct return path
- B:** Supply air temperature is raised toward ASHRAE limit
- C:** All cool air that is delivered is available for the IT load
- D:** IT load is divorced from cooling source locations
- E:** Cool supply air delivery method is flexible

